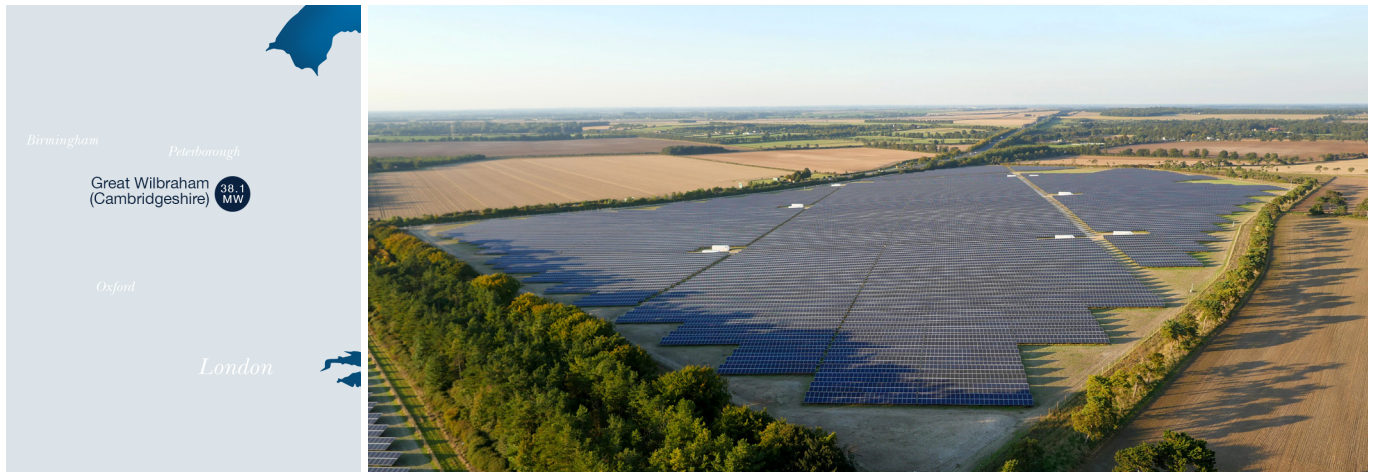


Great Wilbraham Solar Park



Commissioned	March 2015
Site area	148 acres
Installed capacity (MW)	38.1MW
Annual production (MWh)	36,713MWh
Households powered per annum	11,843
CO2 emissions saved (tonnes per annum)	16,968 tonnes

Overview

Despite the Great Wilbraham Solar Park's size and position (close to the A11, east of the village of Fulbourn in Cambridgeshire) the immediate locality has few properties and no sizeable community which might be affected by a direct view of the development. A site was originally chosen on the opposite side of the trunk road; since this would have fallen within the green belt on higher-grade agricultural land, however, the decision was taken to move the park to its present location. Prior to construction, an archaeological survey revealed ring ditches to the north of the site and a barrow in the south. The design was subsequently amended to avoid invasive works

Biodiversity

Careful site management is creating a species-rich grassland habitat which will benefit many varieties of wildlife. Great Wilbraham is an area of monoculture and thought to be of low ecological value. However, the site supports habitats for common reptiles and is bisected by hedgerows and trees, whose value to nesting birds and roosting bats will be enhanced. Although planning conditions required the planting of more boundary trees, these in turn providing new habitats for other species, the strong winds that inhibit tree heights in this uniformly flattish region will prevent excessive shade depriving the park of the abundant available sunlight.